

# INSTALL HI92150

- Downloading Driver for HI92150

<http://software.hannainst.com/>

- Search for **USB**



Product Software Download Page



Below are the current versions of PC compatible software for our products. If you have any questions or problems then please e-mail us at [tech@hannainst.com](mailto:tech@hannainst.com) or contact your local Hanna Sales office for assistance.

## Software Version and Compatibility Chart

Show  entries

Search:

Product Code	Description	Version	O.S. Requirements	File Download
	USB Driver		USB driver for Windows 98, Me, NT	<a href="#">Download Now</a>
	USB Driver		USB driver for Windows Vista, XP, 2000, Server 2003	<a href="#">Download Now</a>

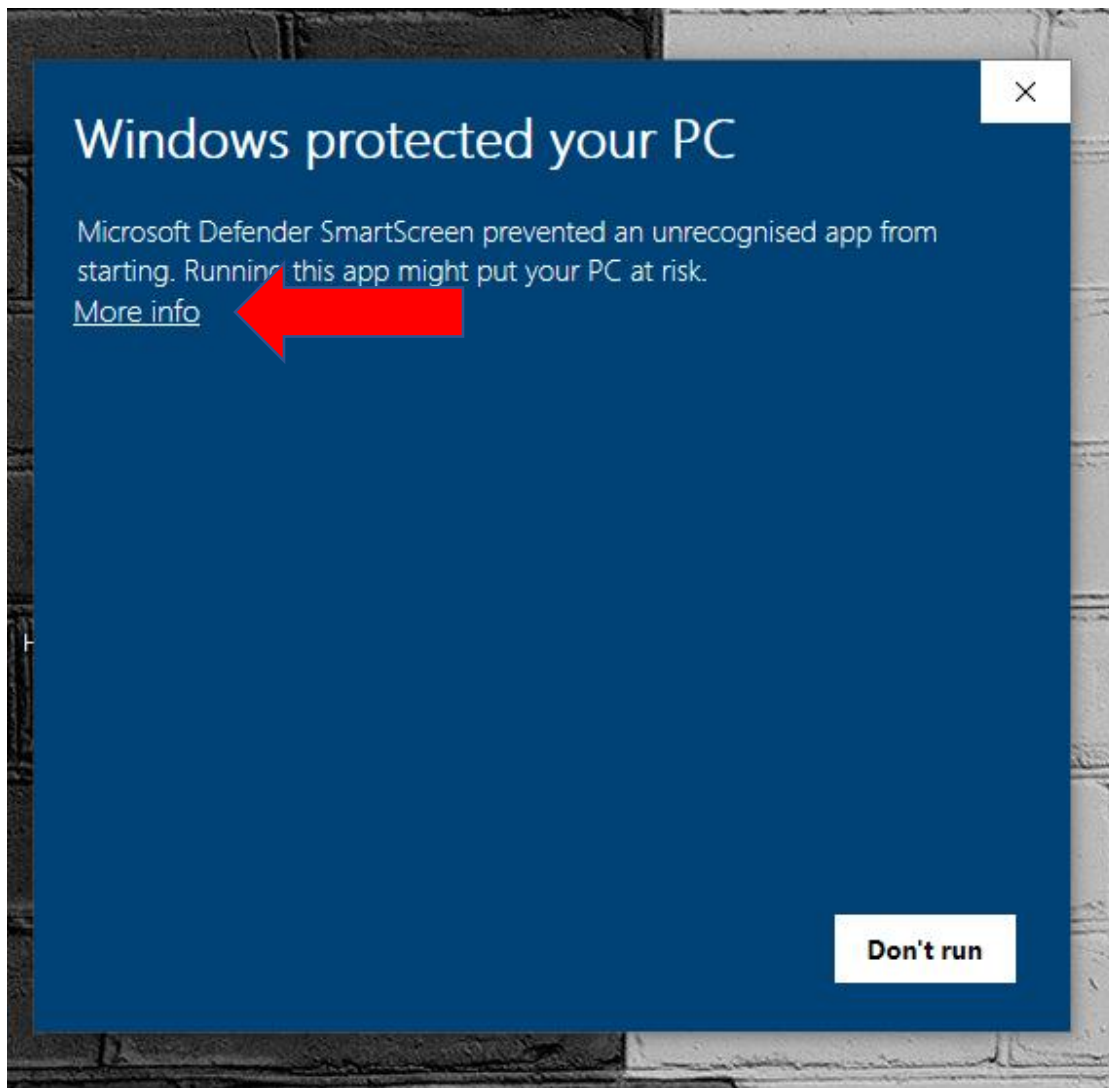
Showing 1 to 2 of 2 entries (filtered from 11 total entries)

Previous  Next

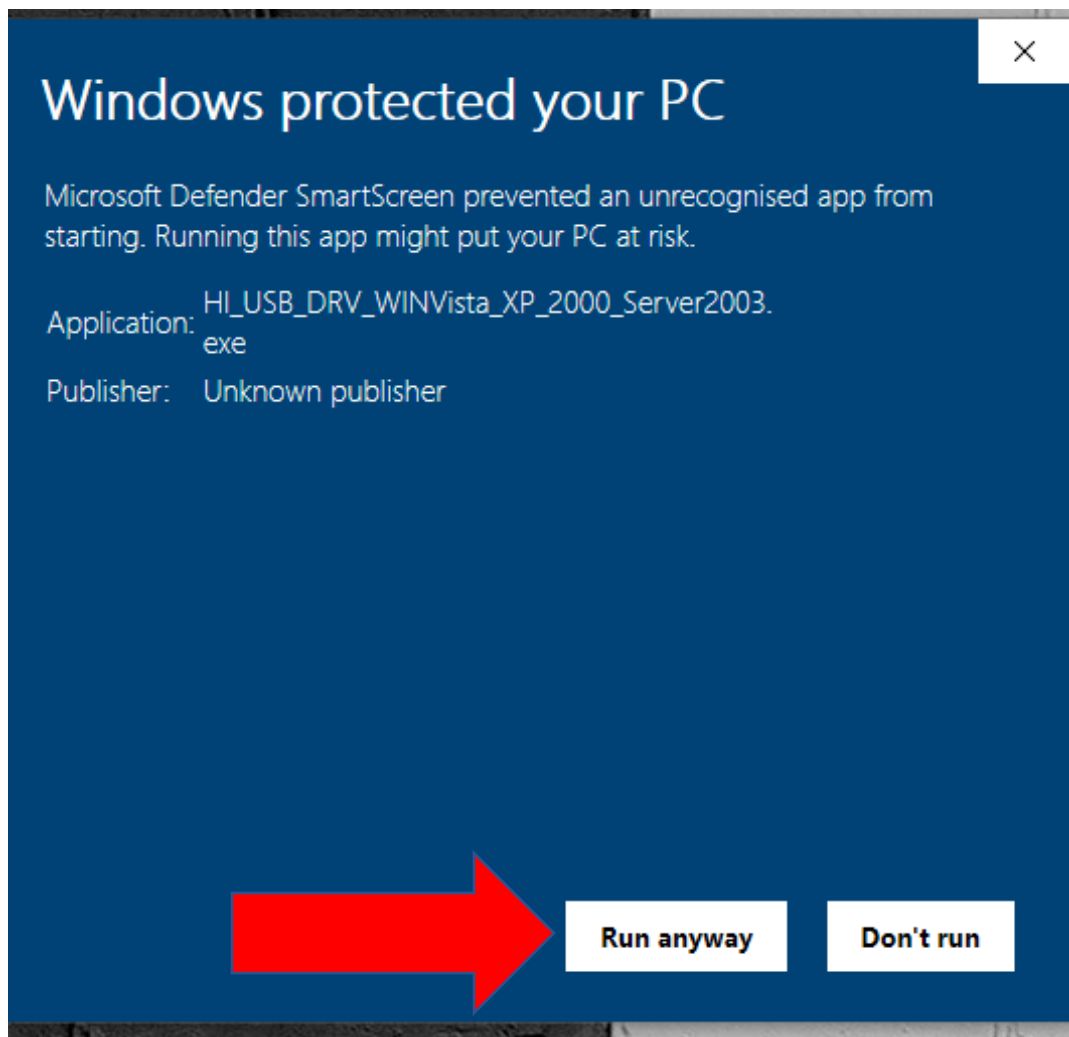
- For Windows 10 – Download now

- Install the **USB Driver**

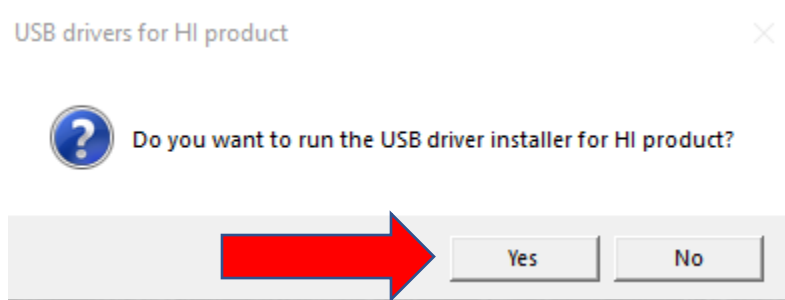
- Click **More Info**



- Click **Run anyway**




- Click **Yes** to intall **USB driver**



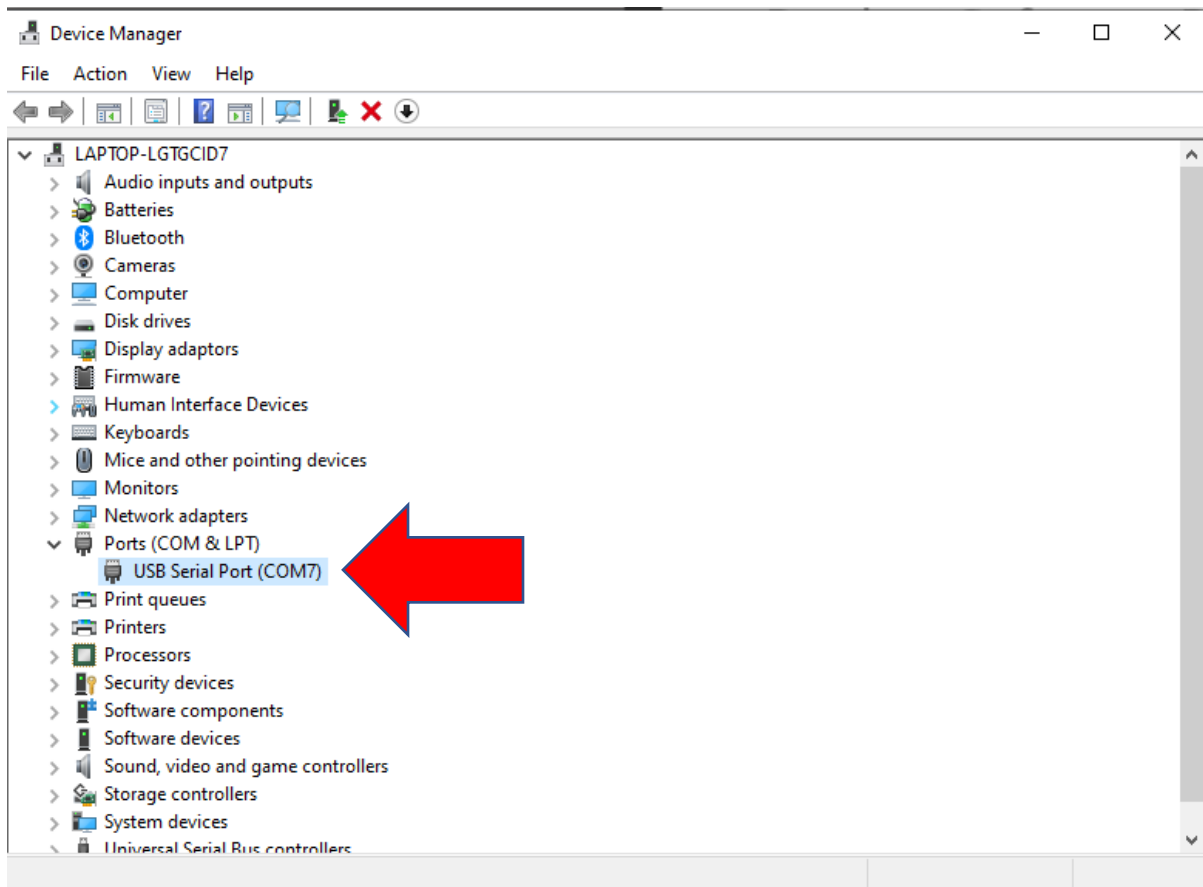
- After installation press **ENTER**.

```
C:\Users\ATTILA~1\AppData\Local\Temp\ckz_88PQ\DPInst_Monx64.exe
64-bit OS detected
"C:\Users\ATTILA~1\AppData\Local\Temp\ckz_88PQ\DPInstx64.exe"
Installing driver...

FTDI CDM Driver Installation process completed.
Press enter.
```



- Now connect the meter
- To check the **COM PORT** Go in **Device Manager**



- Open the **App**
- Start Configuring