

INSTALL HI900900

Downloading Driver for **HI900900**

<http://software.hannainst.com/>



Below are the current versions of PC compatible software for our products. If you have any questions or problems then please e-mail us at tech@hannainst.com or contact your local Hanna Sales office for assistance.

Software Version and Compatibility Chart

Show entries

Search:

Product Code	Description	Version	O.S. Requirements	File Download
HI900900	HI90X and HI93X Titrators Family	3.41	Windows® 10 & below	Download Now


Showing 1 to 1 of 1 entries (filtered from 11 total entries)

Previous Next



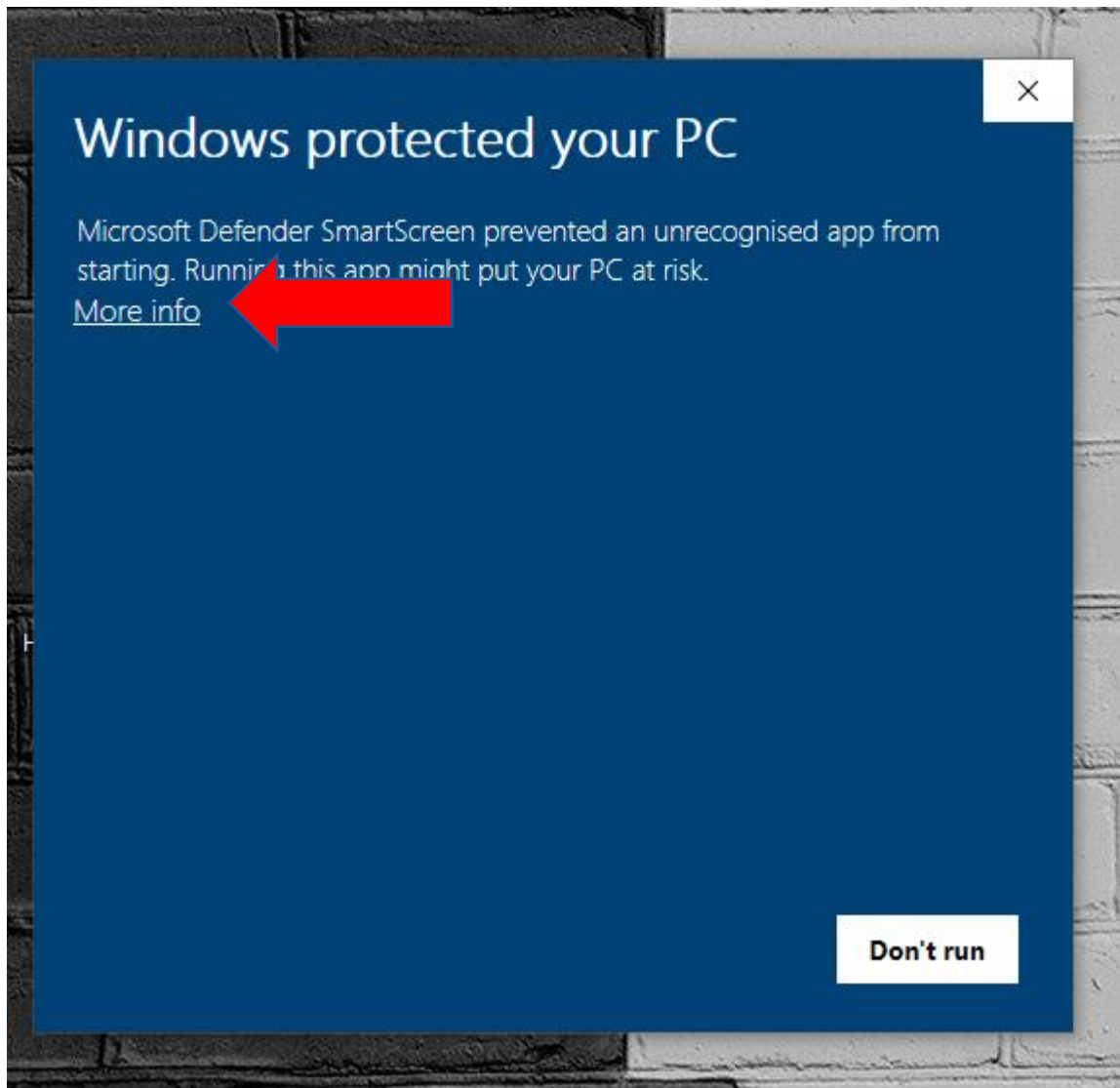
After installation go back to <http://software.hannainst.com/> and download the **USB Driver**

HI929829	HI9829 Multiparameter Meters	1.0.16	Windows® 10 & below	Download Now
	USB Driver		USB driver for Windows 98, Me, NT	Download Now
	USB Driver		USB driver for Windows Vista, XP, 2000, Server 2003	Download Now

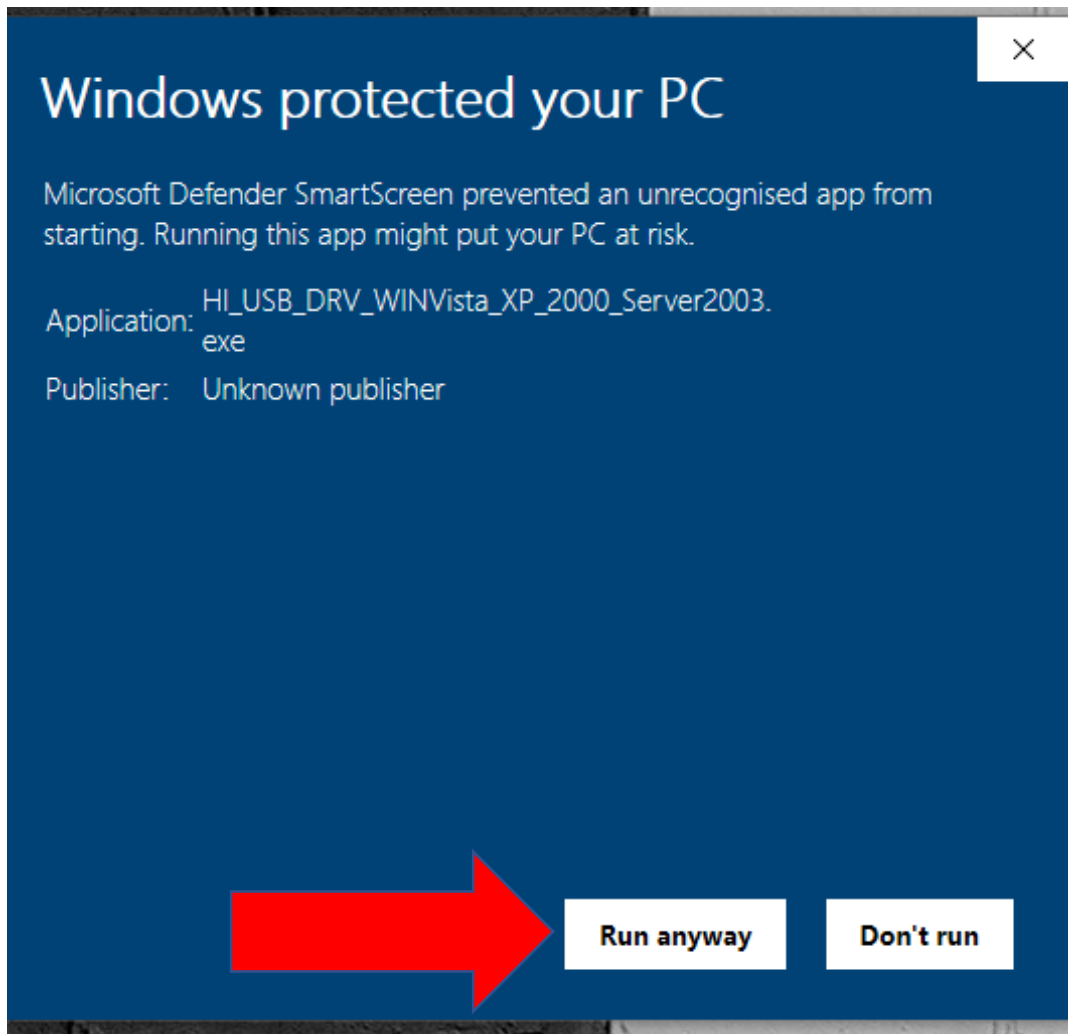


Install the **USB Driver**

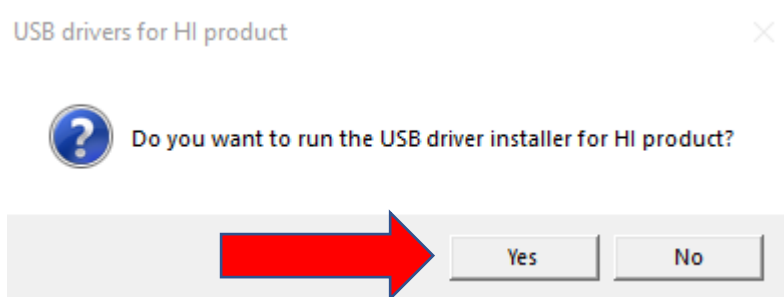
Click **More Info**



Click **Run anyway**



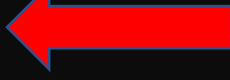
Click **Yes** to intall **USB driver**



After installation press **ENTER**.

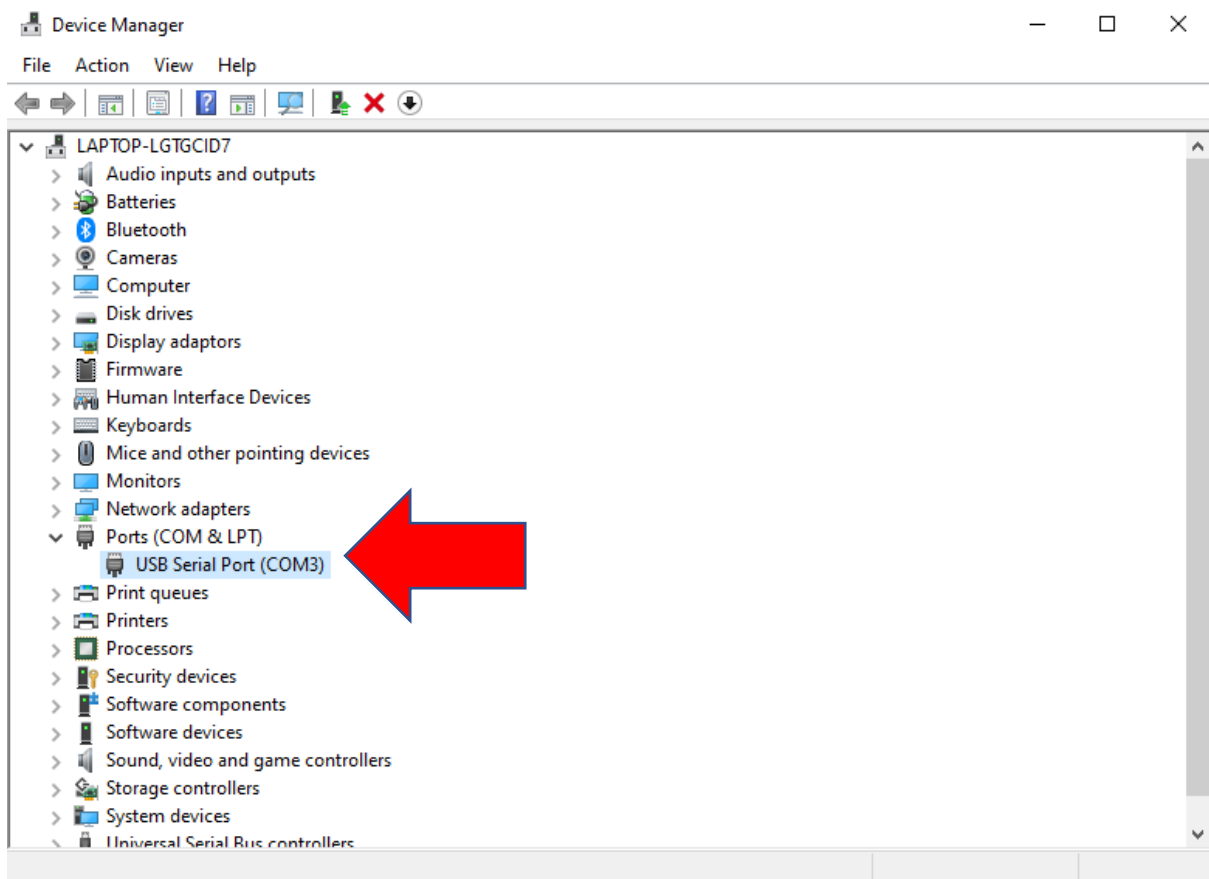
```
C:\Users\ATTILA~1\AppData\Local\Temp\ckz_88PQ\DPInst_Monx64.exe
64-bit OS detected
"C:\Users\ATTILA~1\AppData\Local\Temp\ckz_88PQ\DPInstx64.exe"
Installing driver...

FTDI CDM Driver Installation process completed.
Press enter.
```

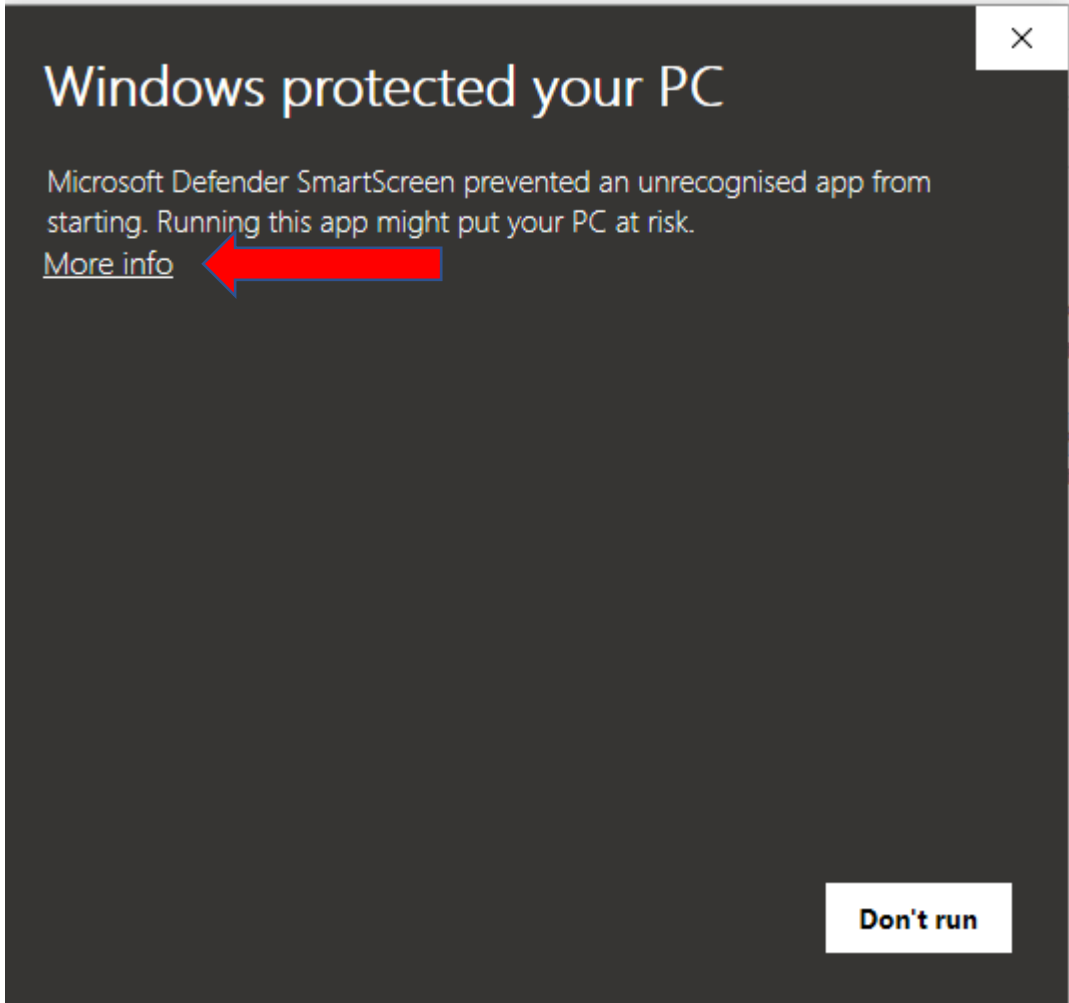


Now connect the **HI 900900**

To check the **COM PORT** Go in **Device Manager**



Install **HI900900 PC app**



Click **Run anyway**

Windows protected your PC



Microsoft Defender SmartScreen prevented an unrecognized app from starting. Running this app might put your PC at risk.

Application: HI900PCv3.41_setup.exe

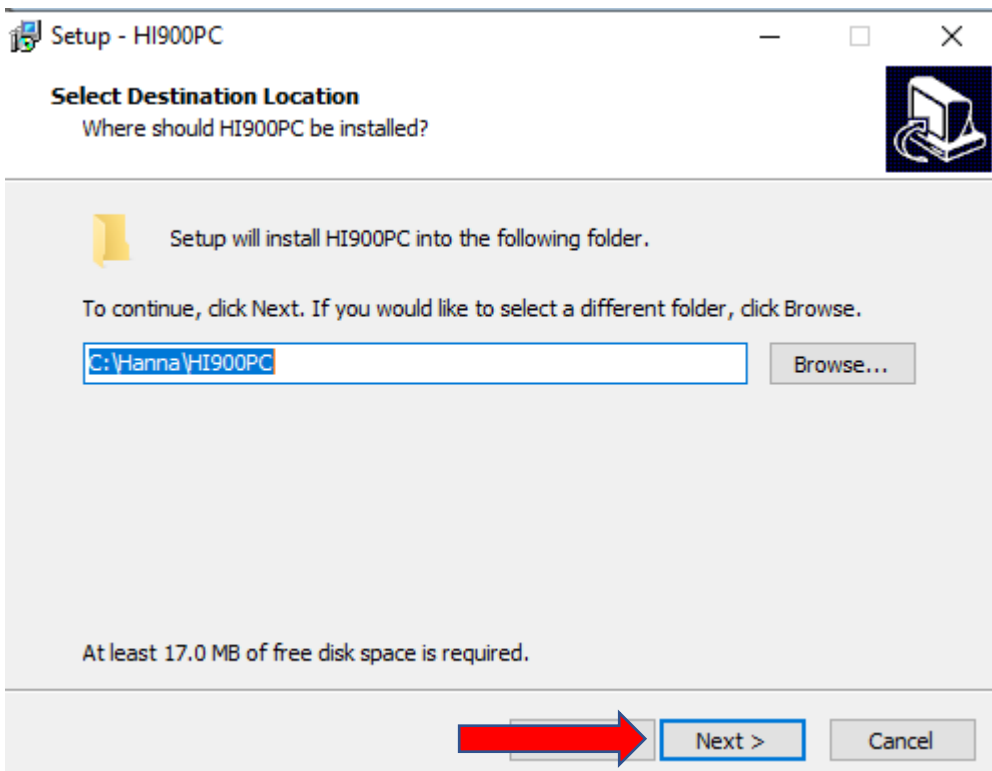
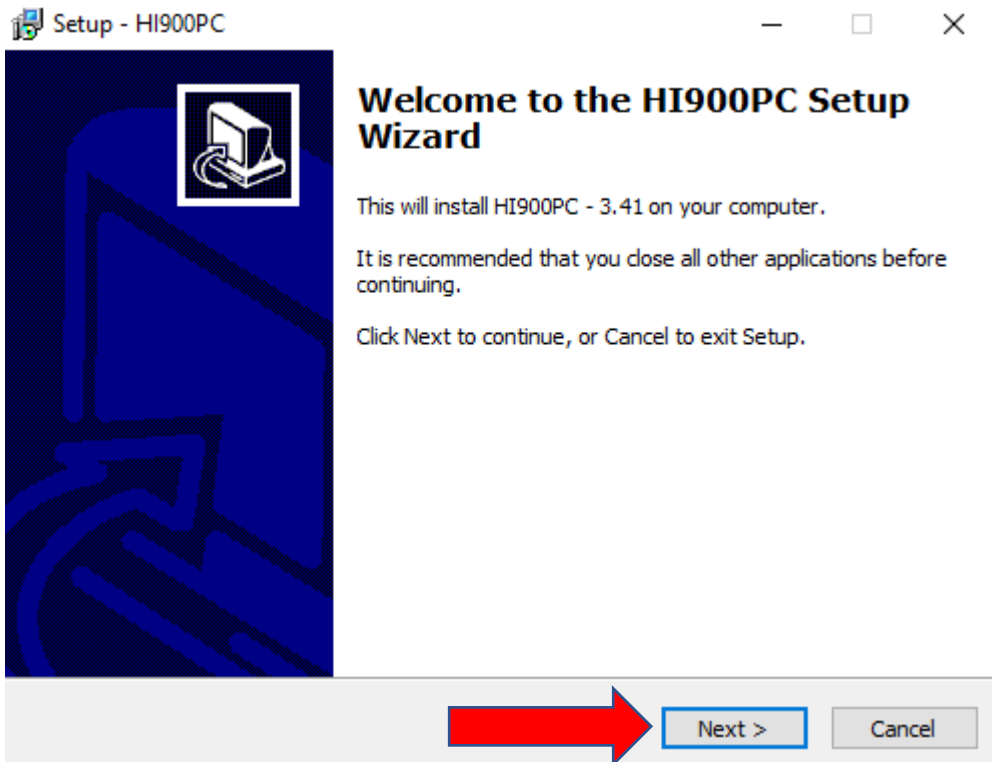
Publisher: Unknown publisher

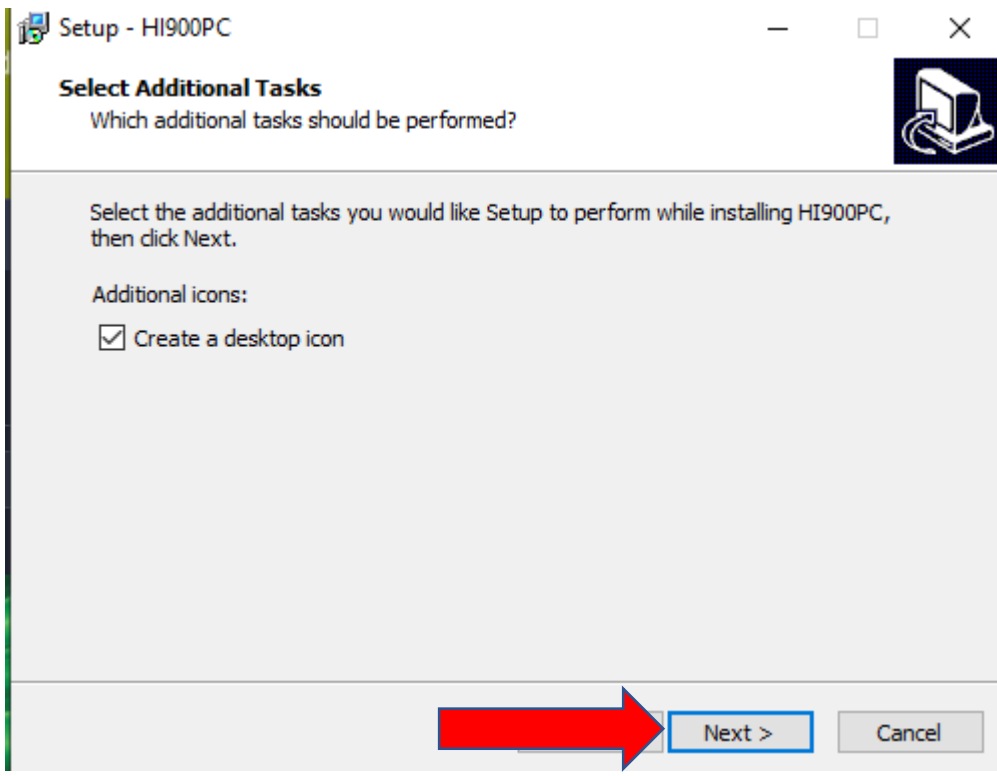
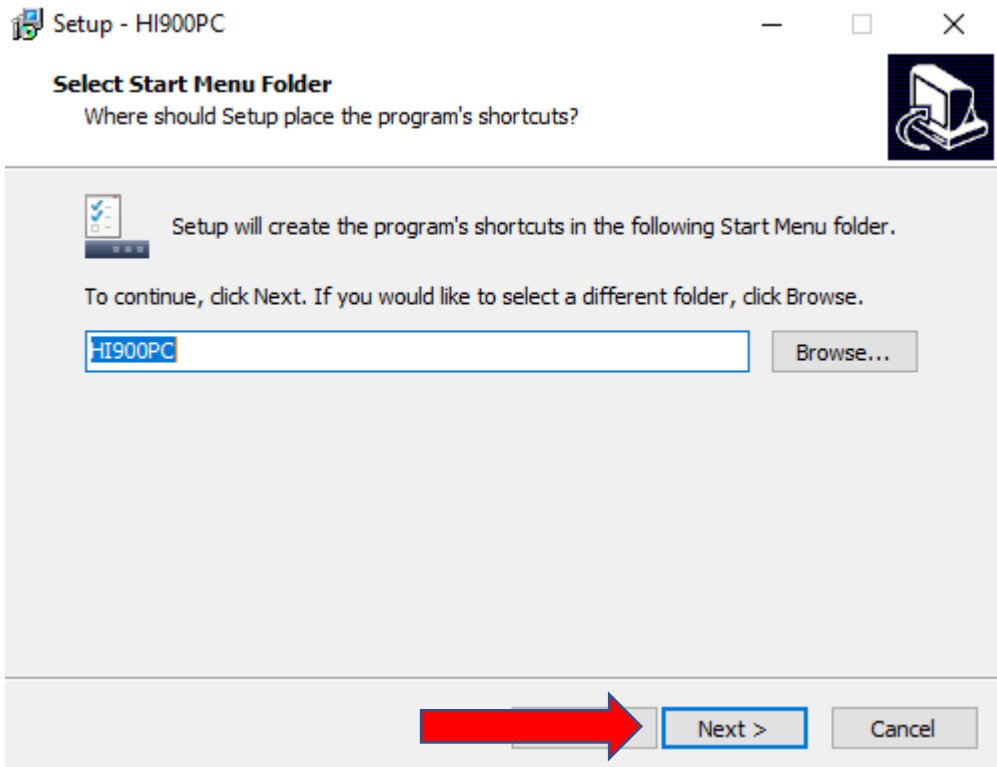


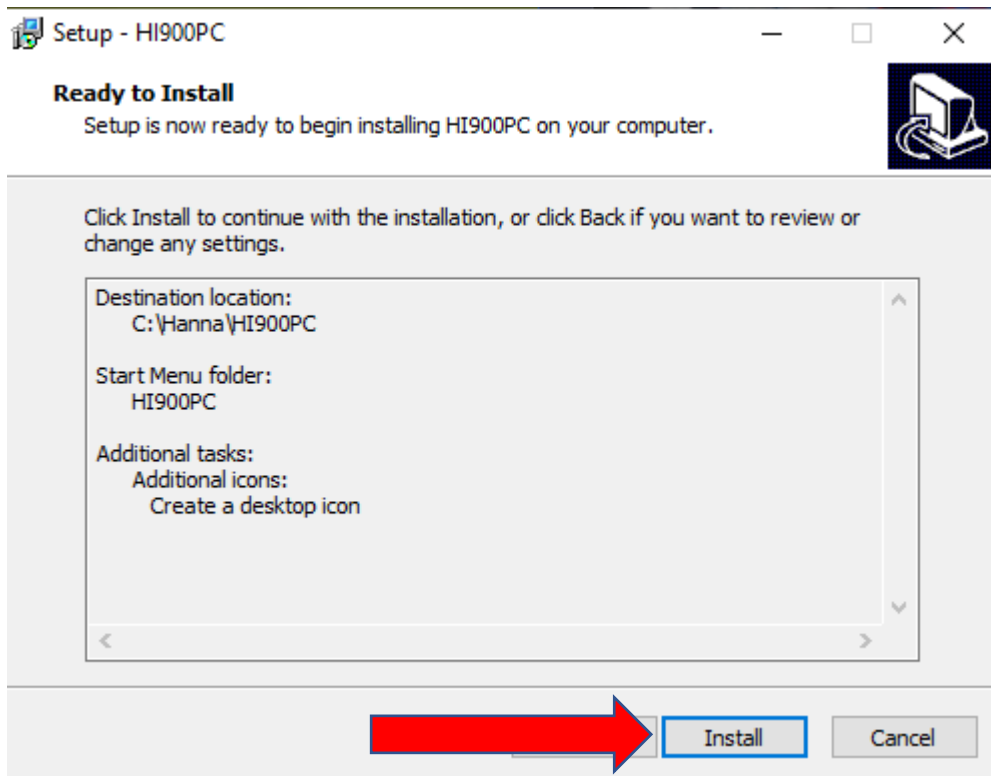
Run anyway

Don't run

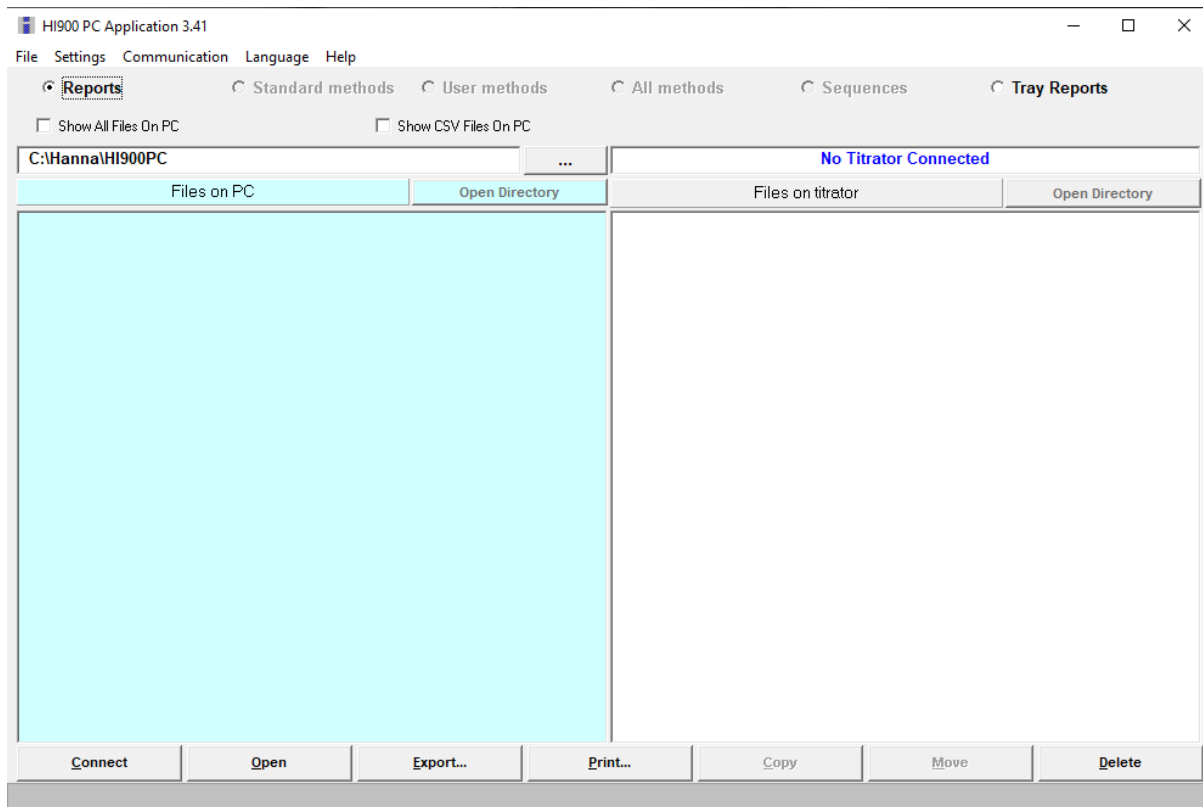
Install the **App**



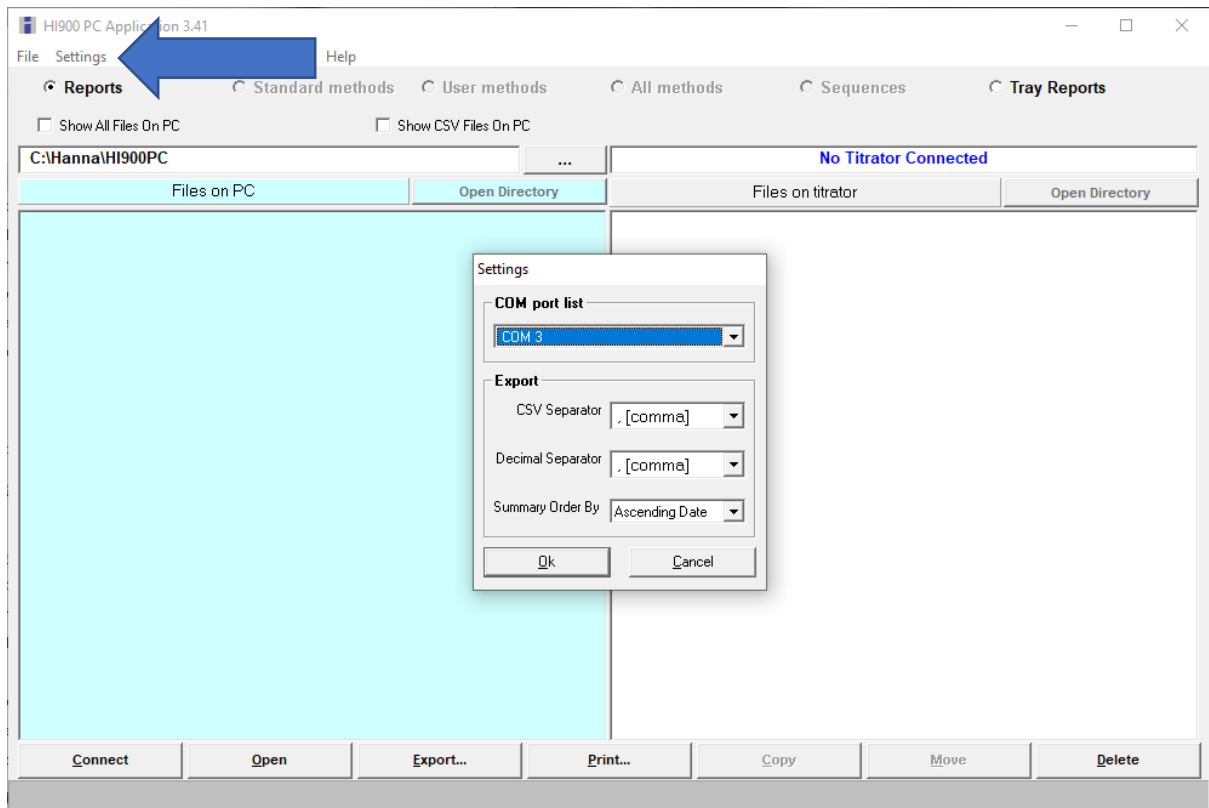




Open the **App**



Connect to **Com port**



Connect the **Titrator**