

INSTALL HI9298194

Downloading Driver for HI9298194



Below are the current versions of PC compatible software for our products. If you have any questions or problems then please e-mail us at tech@hannainst.com or contact your local Hanna Sales office for assistance.

Software Version and Compatibility Chart

Show 25 entries Search:

Product Code	Description	Version	O.S. Requirements	File Download
HI9298194	HI98194, HI98195, HI98196 and HI98199 Portable Meters	1.0.4	Windows® 10 & below	Download Now
HI929829	HI9829 Multiparameter Meters	1.0.16	Windows® 10 & below	Download Now

Showing 1 to 2 of 2 entries (filtered from 11 total entries) Previous 1 Next

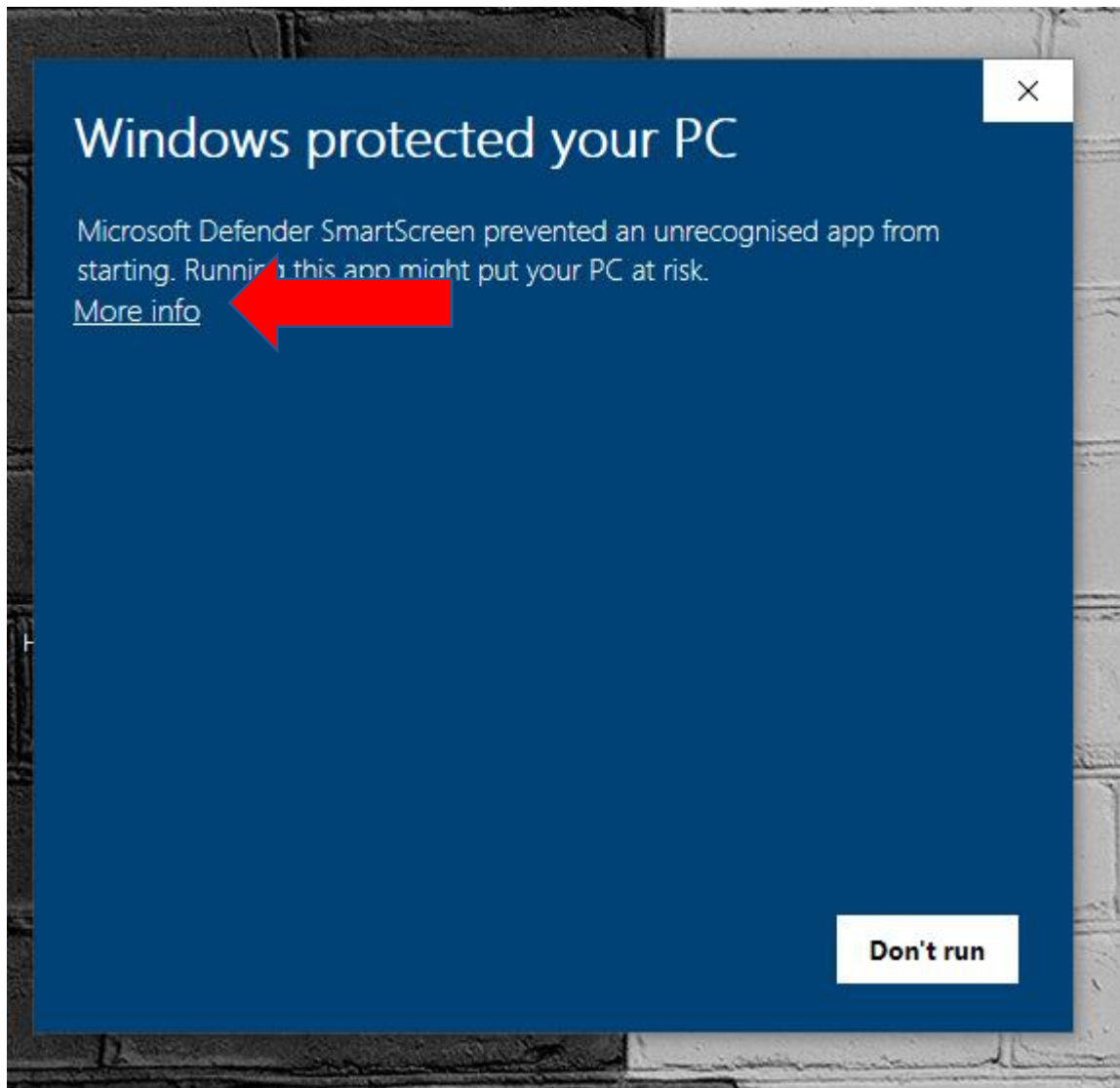
<http://software.hannainst.com/>

After installation go back to <http://software.hannainst.com/> and download the **USB Driver**

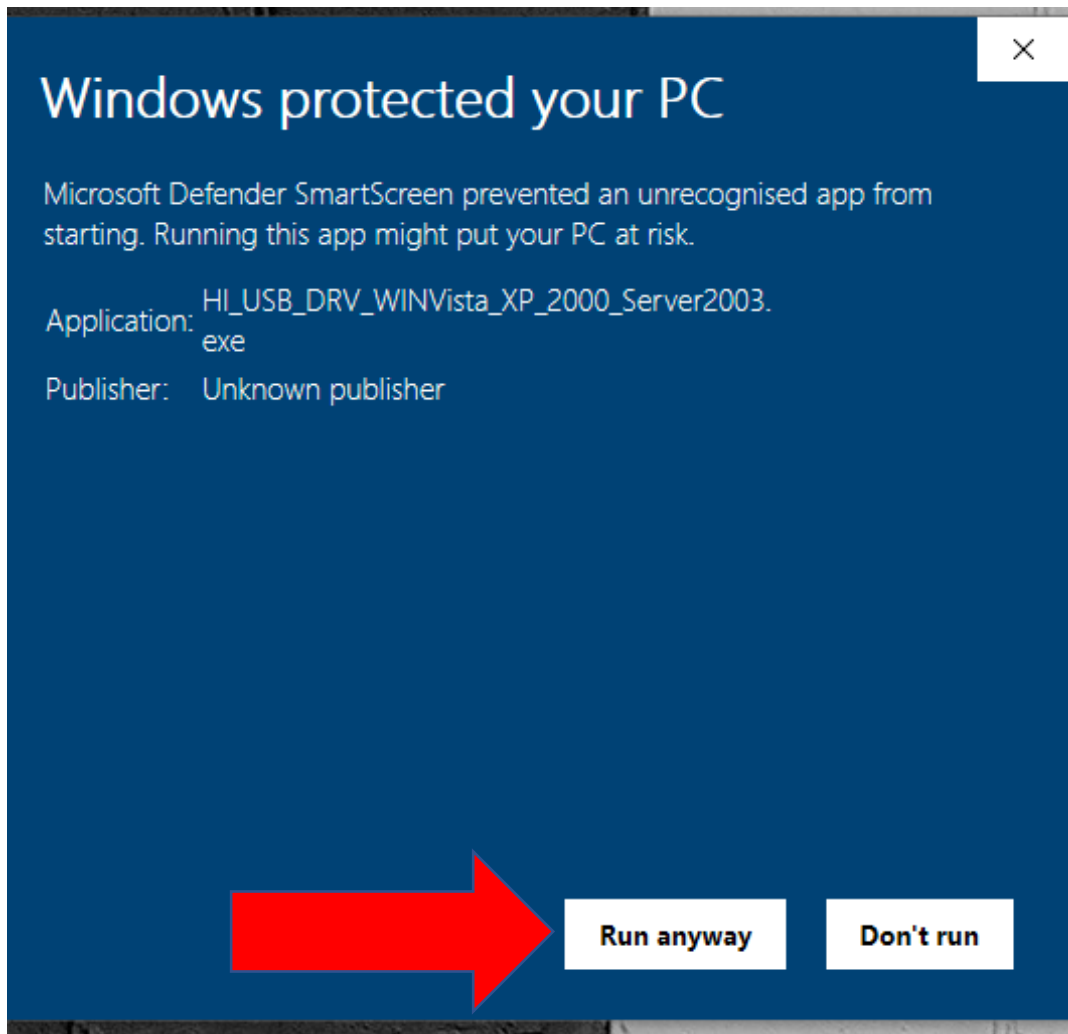
HI929829	HI9829 Multiparameter Meters	1.0.16	Windows® 10 & below	Download Now
	USB Driver		USB driver for Windows 98, Me, NT	Download Now
	USB Driver		USB driver for Windows Vista, XP, 2000, Server 2003	Download Now

Install the **USB Driver**

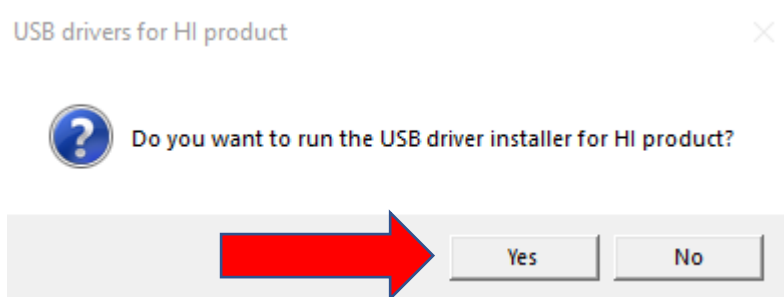
Click **More Info**



Click **Run anyway**



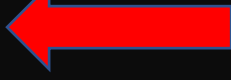
Click **Yes** to intall **USB driver**



After installation press **ENTER**.

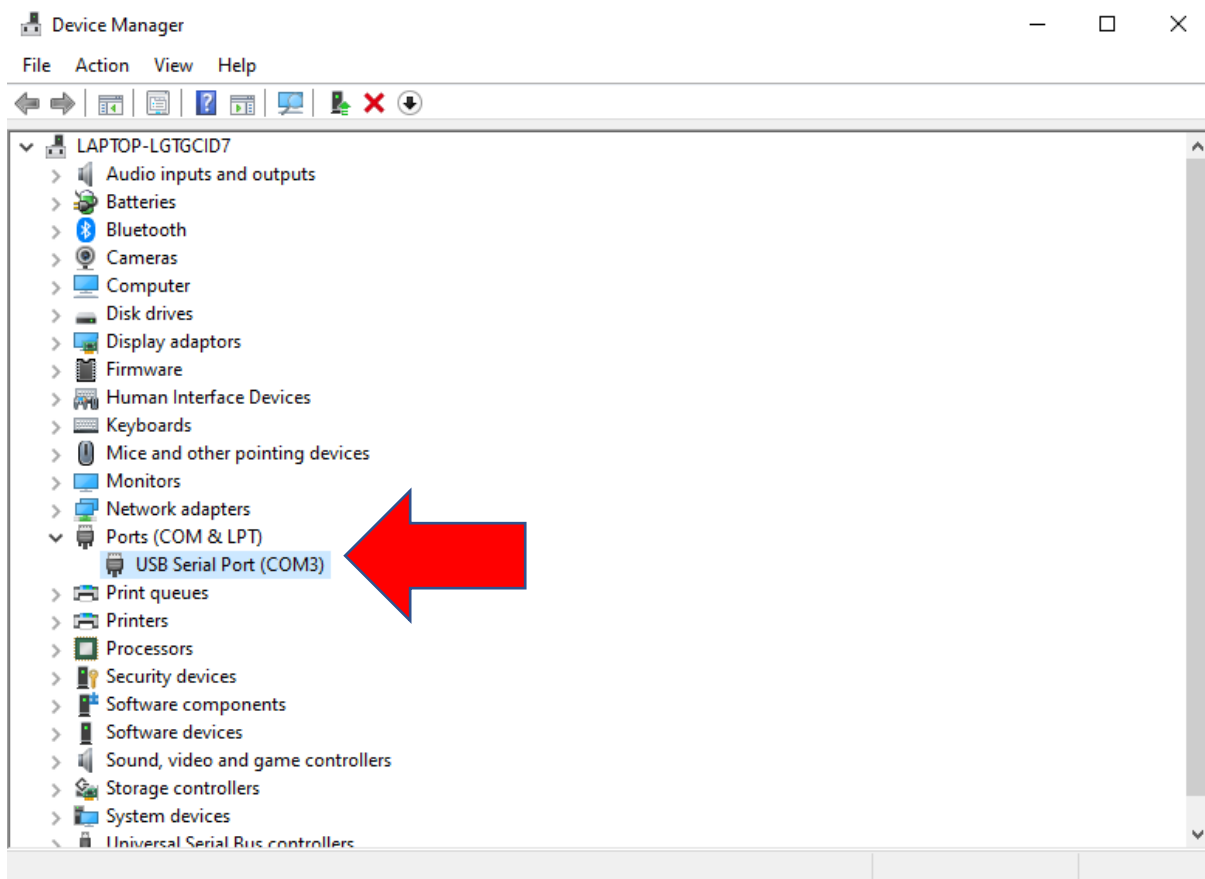
```
C:\Users\ATTILA~1\AppData\Local\Temp\ckz_88PQ\DPInst_Monx64.exe
64-bit OS detected
"C:\Users\ATTILA~1\AppData\Local\Temp\ckz_88PQ\DPInstx64.exe"
Installing driver...

FTDI CDM Driver Installation process completed.
Press enter.
```

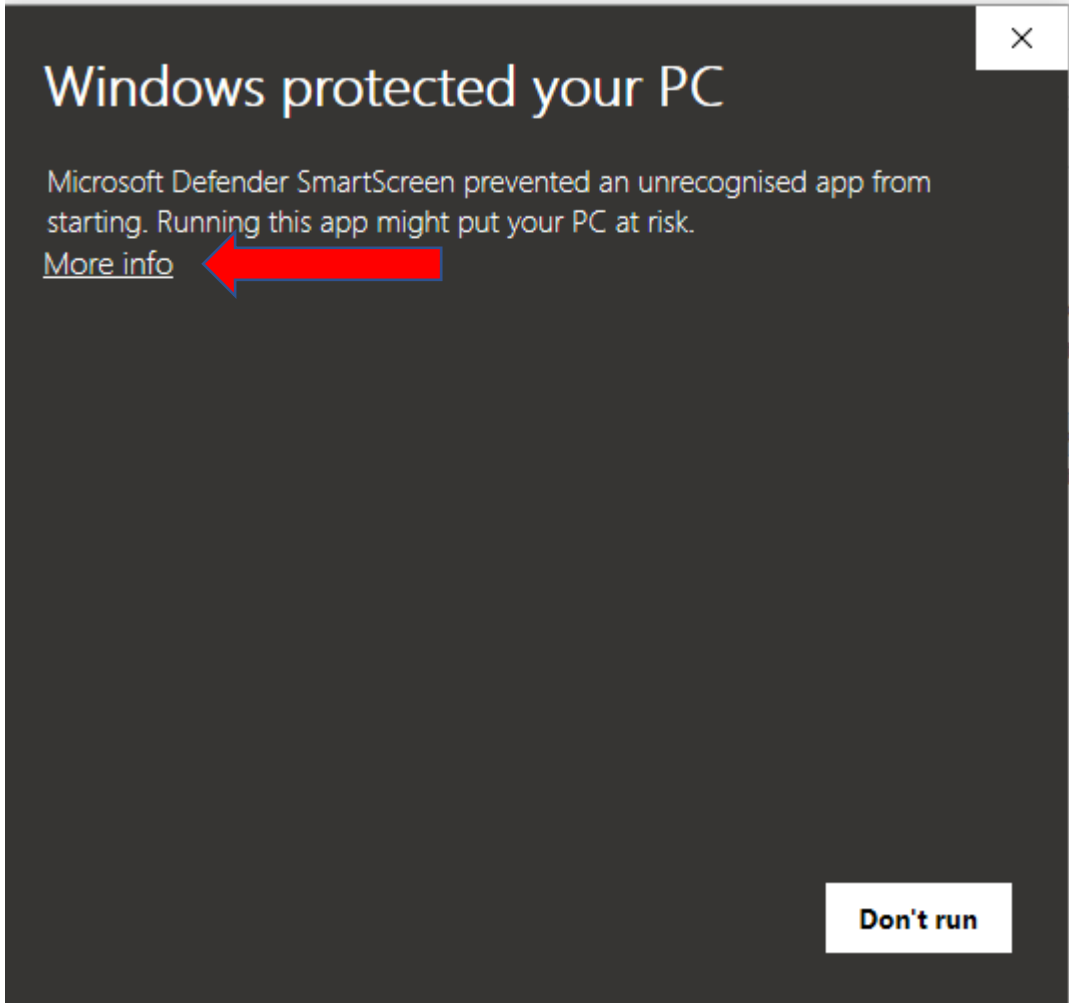


Now connect the **HI 900900**

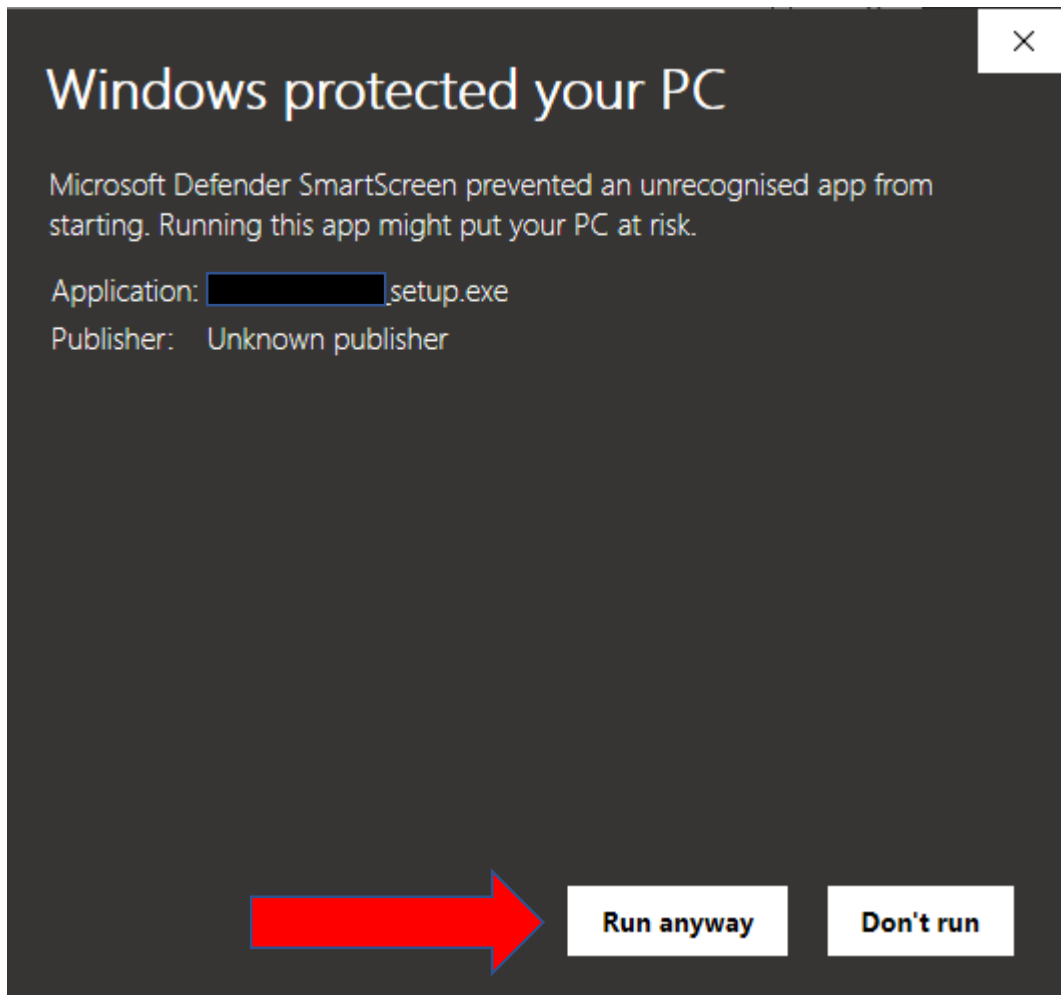
To check the **COM PORT** Go in **Device Manager**



Install **HI9298194 PC app**



Click **Run anyway**



Install the **App**

Now Register the **User** and **Company**

User Registration

User Name

Company

OK

Now connect to the Device

